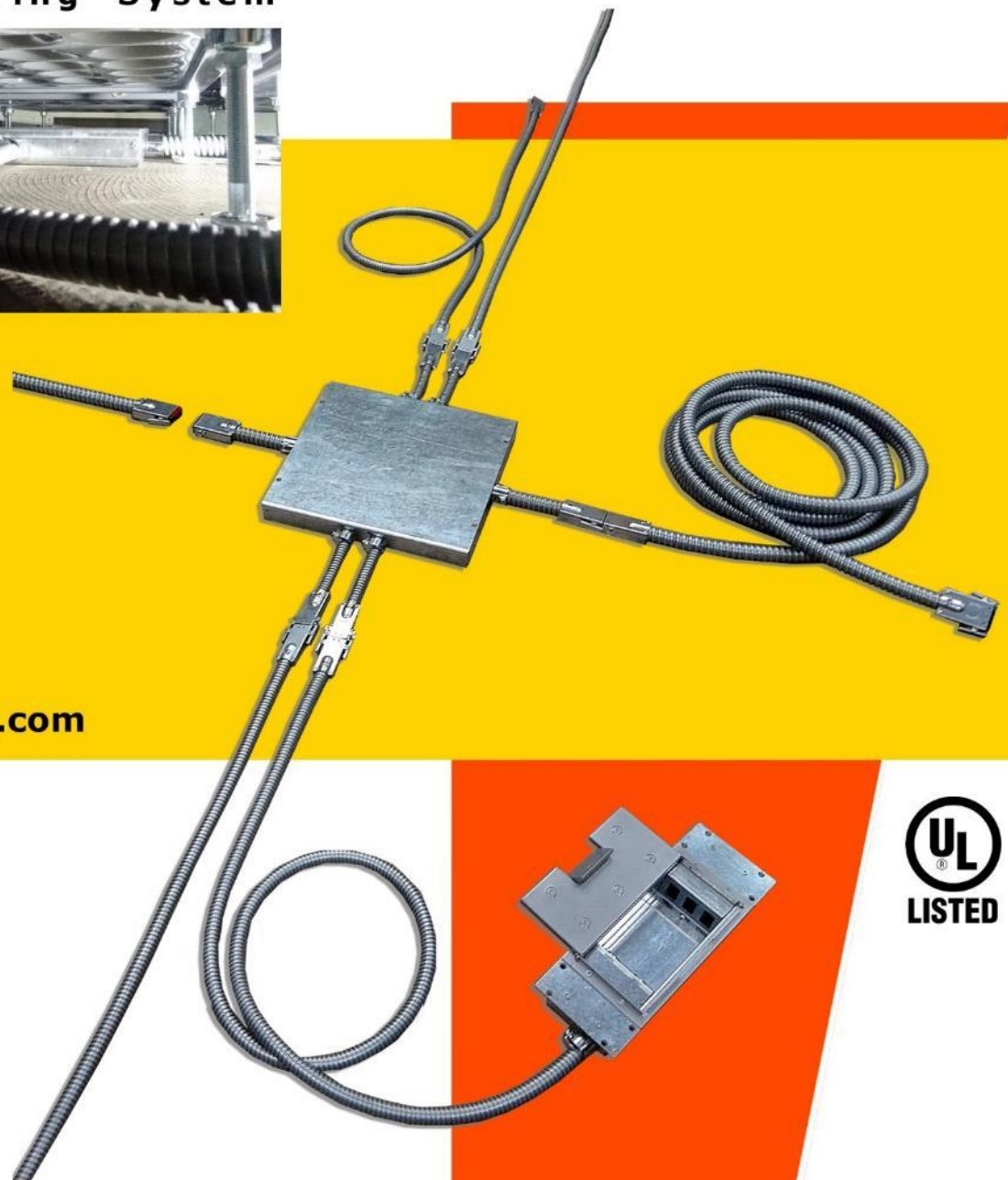


NETFLOR®

ZoneTeq series

Modular Wiring System



www.zoneteq.com



Electrical Solutions at Maximum Efficiency

Plug & Play no sheathing stripping, no cutting at job site

ZoneTeq Modular Wiring System

ZoneTeq modular wiring system (MWS) offers pre-engineered, safer, and efficient solution for electrical installation. The pre-assembled Zone Boxes, Jumpers, floor boxes, wall-mount outlets, have largely eliminated sheathing stripping and cutting at job site.

- **Efficient:** pre-assembled units of 4-circuits, 2-circuits, 1-circuit configuration, provides extraordinary labor-saving for connection, routing, and expansion.
- **Safety:** Eliminate cutting at job site. Minimize human error during and after installation.
- **Changeability:** Re-location, upsizing or downsizing in working spaces are matter of hours.
- **Environment-friendly:** all components are **100% re-usable**.
- **Cost saving:** (1) low initial costs (2) high changeability, 100% re-useable (3) **very-low relocation costs**, remove and relocate the system just “matter of **unplug, re-distribute, and plug**”.



ZoneTeq MWS distributes under low-profile access floor, and under conventional access floor as well.



Jumpers connect zone boxes, floor boxes under access floor.



ZoneTeq MWS accommodates Netfloor ECO series low-profile access floors.

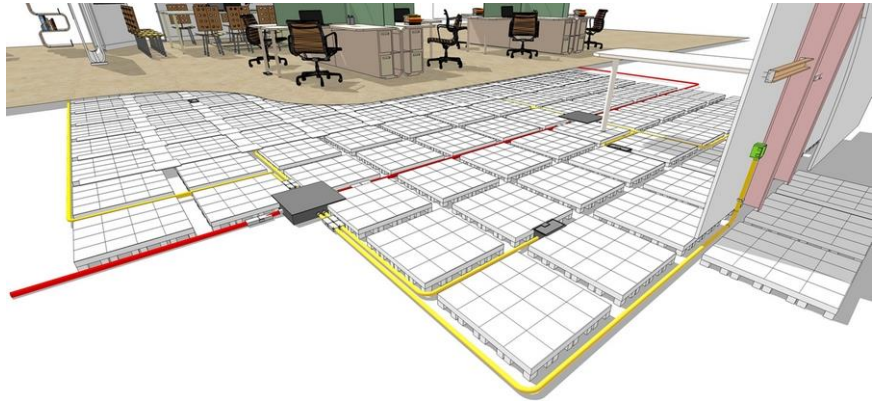


series connection and extension of floor boxes.

Applicable and Sustainable Solutions

Offices:

For contemporary modern offices, tens to hundreds of persons, ZoneTeq MWS provides instant, high-changeability, ability for quick expansion, re-organization,... at shortest time frame, efficient, and cost-effective.



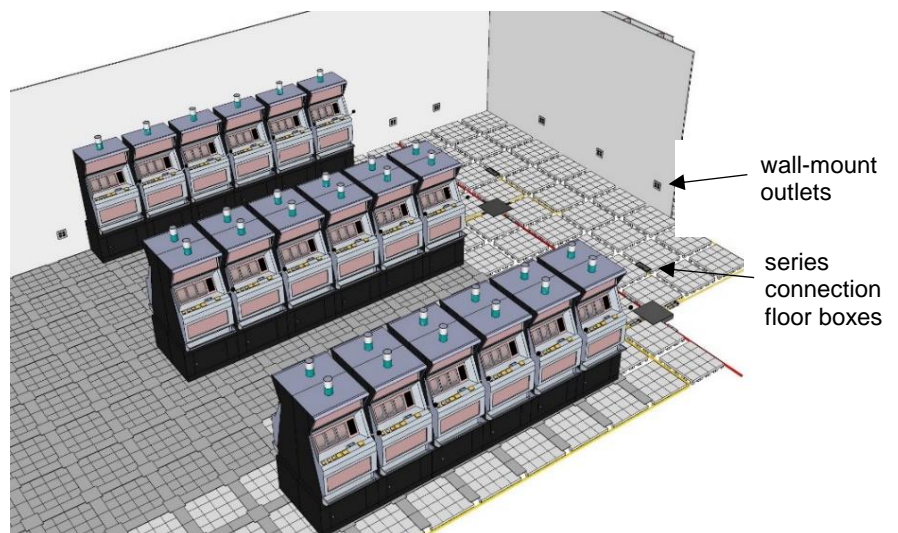
Education, Military, Public Services:

In training classrooms, conference rooms, public libraries, military units, and many of the public service centers, etc., where required high-density of power supply.



Recreational and Commercial:

Systematic, plug & play modular wiring is most suitable for using at modern facilities or equipment in environment of high-density deployment and using of power receptacles such as at casinos, fitness centers, game rooms, coffee shops, etc.



I. MODULARIZED CIRCUITS

ZoneTeq 4 Circuits, 2 circuits, 1 circuit

- 1. ZoneTeq 4 circuits:** 4 live, 4 neutral and 2 ground modular wiring system. Follow electrical plan to set Zone Boxes' location. The connection of ZoneTeq can be started from electrical panel, or from beginning of access floor.

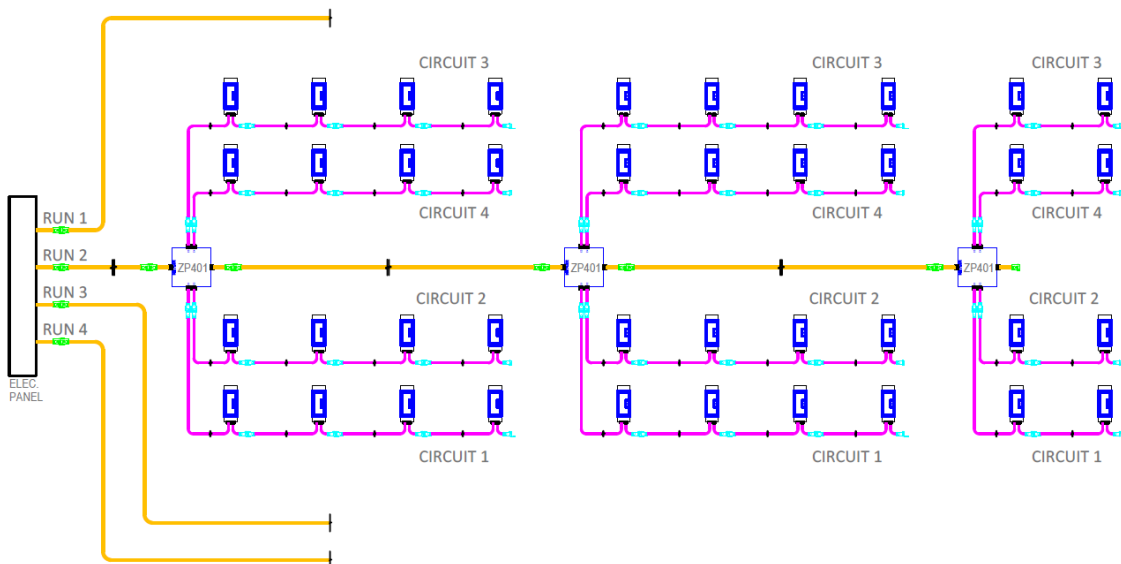
1A: Install Power Entry (ZPJ-10PFE) at electrical panel.

- (1) Install 10 wires of **ZPJ-10PFE Power Entry** at electrical panel, to establish 4 circuits.
- (2) Connect 10-port Jumper to Power Entry, and to extend to Zone Box (ZP401).
- (3) Connect 3-port Jumper to Zone Box (ZP401), for series extension EXT floor boxes (SE403EXT, SE60EXT, SE40EXT, SE60EXT, etc.). One Zone Box (ZP401) provides 4 circuits.

Single Series Distribution: deploy single Zone Box for intensive electrical points

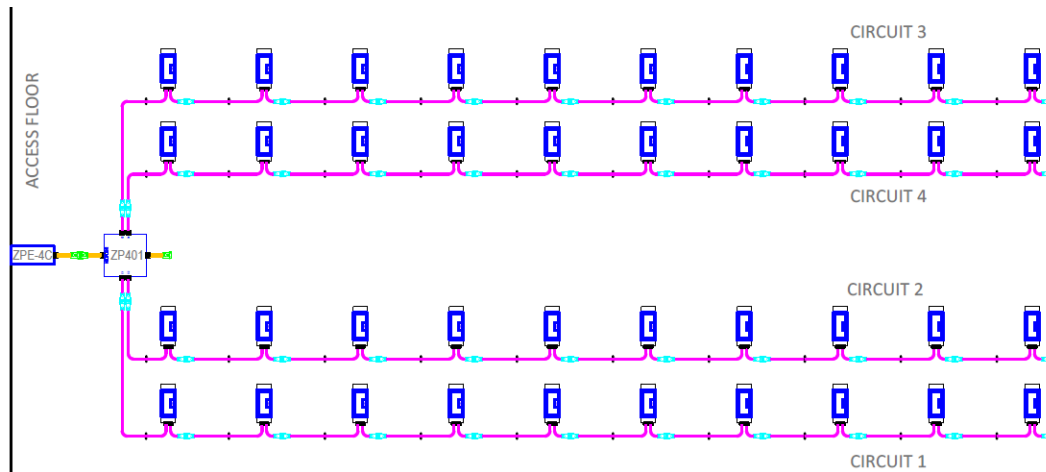


Divisional Series Distribution: deploy Zone Boxes for electrical points in large space.



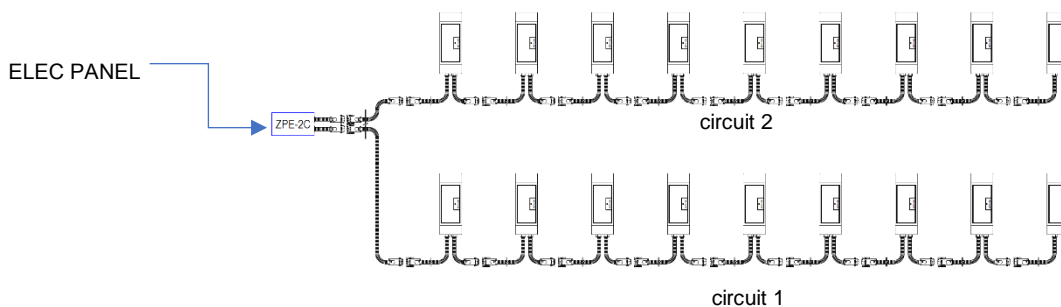
1B: Install Power Entry (ZPE-4C) at beginning of Access Floor

- (1) Run 4 circuits from electrical panel to beginning of access floor.
- (2) Install the 9 wires at ZPE-4C, to establish 4 circuits, distribute through ZP401
- (3) Connect 3-port Jumper to Zone Box (ZP401), for series extension EXT floor boxes.



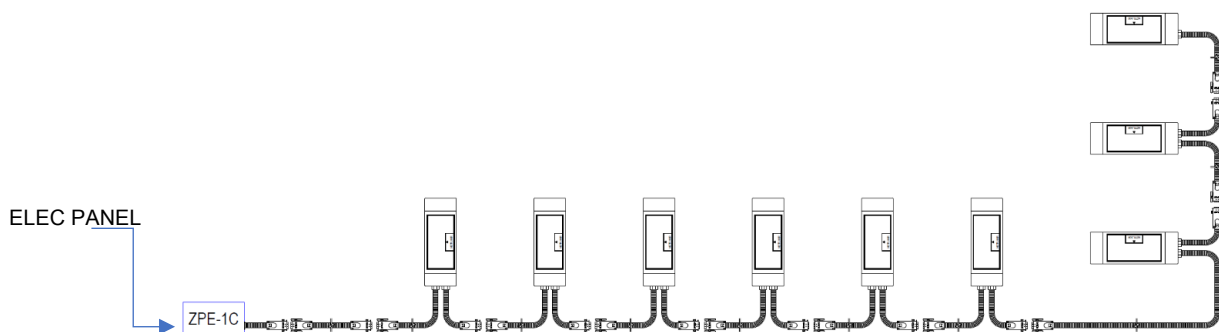
2. ZoneTeq 2-circuits:

- (1) Run 2 circuits from electrical panel to beginning of access floor.
- (2) Install the 2 circuits at Power Entry ZPE-2C at beginning of access floor.
- (3) Series connection of EXT floor boxes per electrical plan of each circuit.



3. ZoneTeq 1-circuit:

- (1) Run 1 circuit from electrical panel to beginning of access floor.
- (2) Install the 1 circuit at Power Entry ZPE-1C at beginning of access floor.
- (3) Series connection of EXT floor boxes per electrical plan.



II POWER ENTRY

1. “Power-Entry” starts from the Electric Panel

Run cables from electrical panel as beginning of ZoneTeq systems

1A: install Power Entry (ZPJ-10PFE) at electrical panel





Each Power Entry ZPJ10-PFE is 4 circuits whip, with a female connector for connecting to 4 circuits jumper. The example below is for a large office space, which installed with 4 Power Entry, to provide 16 circuits.

4 circuits whip



There are 4 Live, 4 Neutral, 2 grounds 12AWG wires to install in electrical panel

each wire labeled with circuit and sequence

			
Example: electrical Box installed with 16 breakers	4 X ZPJ10-PFE Installed onto breakers 16 circuits in series,	tagged series # of circuit aside each breaker	4 circuits jumpers connection

1B: install Power Entry (ZPJ-3PFE-F) at electrical panel

Each Power Entry ZPJ-3PFE is 1 circuit whip, with a female connector for connecting to 1 circuits jumper starting from electrical panel

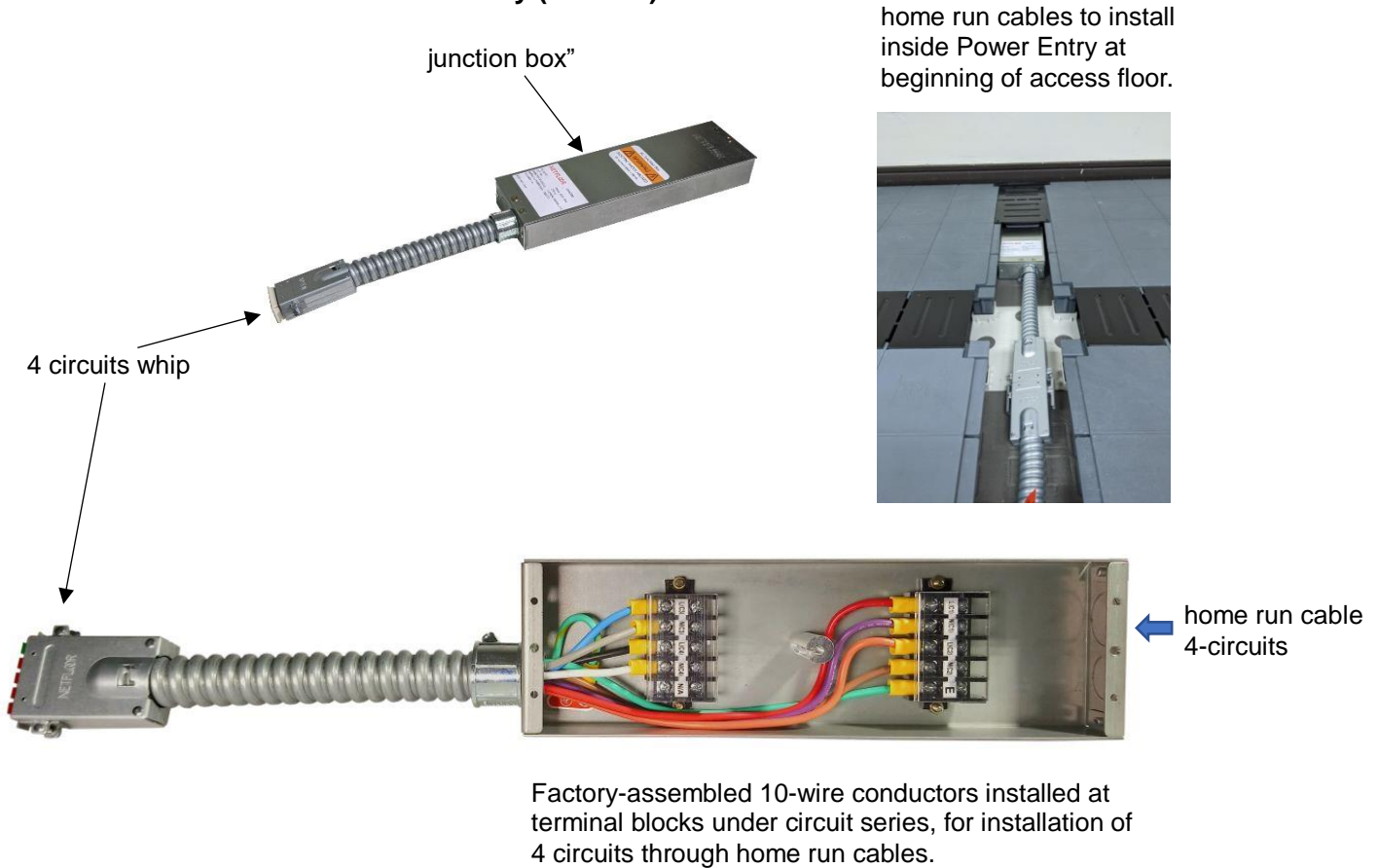


2. "Power-Entry" starts at beginning of access floor

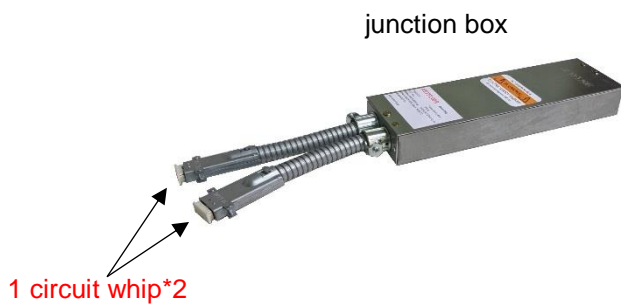
Run cables from electrical panel to access floor as beginning of ZoneTeq systems.

The Power Entries are available for 4 circuits (ZPE-4C), 2 circuits (ZPE-2C), and 1 circuit (ZPE-1C). The electrician to establish the circuit/circuits in accordance with circuit number remarked on the terminal blocks in the junction box.

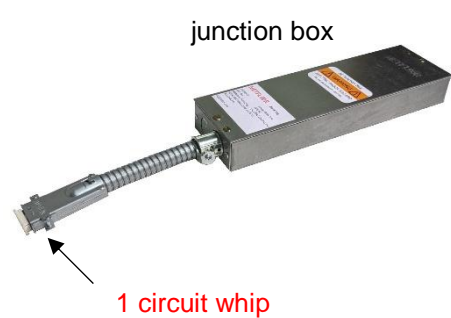
2A: Four Circuits Power Entry (ZPE-4C)



2B: Two Circuits Power Entry (ZPE-2C)



2C: One Circuit Power Entry: (ZPE-1C)



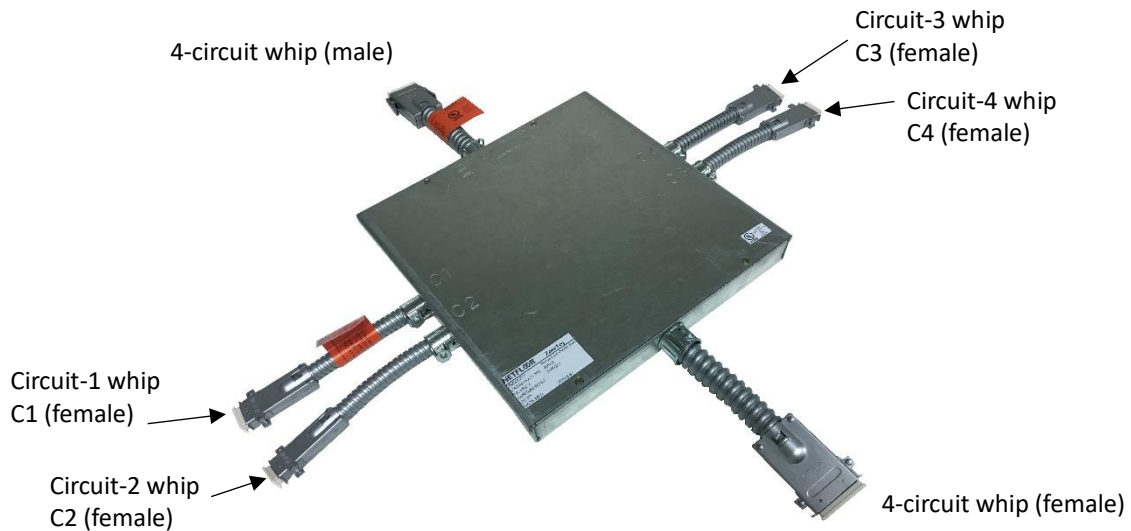
III POWER DISTRIBUTION

Distribute power from “Power Entry” by means of Zone Boxes and Jumpers.
 Connection and extension of Zone Boxes and Jumpers are matter of plug & play.
 There is no cutting, nor sheathing during whole process of connection and extension.

1. 4-circuits to 1-circuit distribution box (Zone Box) (ZP401)

1A: 4-circuit male and female connector: Plug 4 circuit jumper to serial every Zone Box.

1B: 1-circuit female connector (C1 to C4): Plug 1-circuit jumper to electrical points

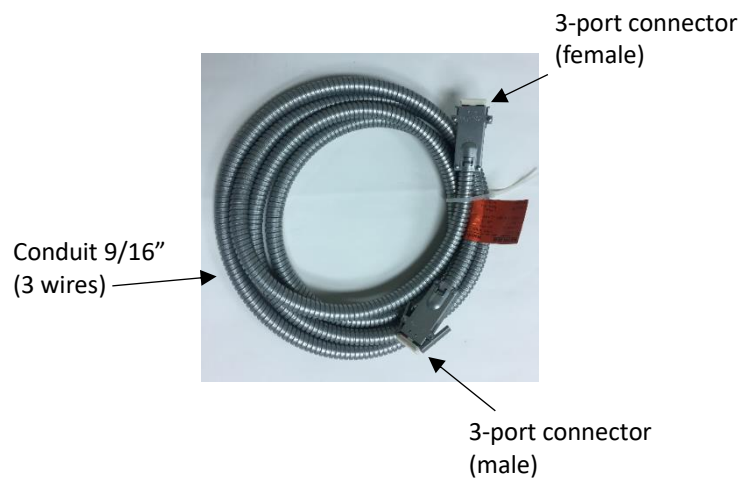
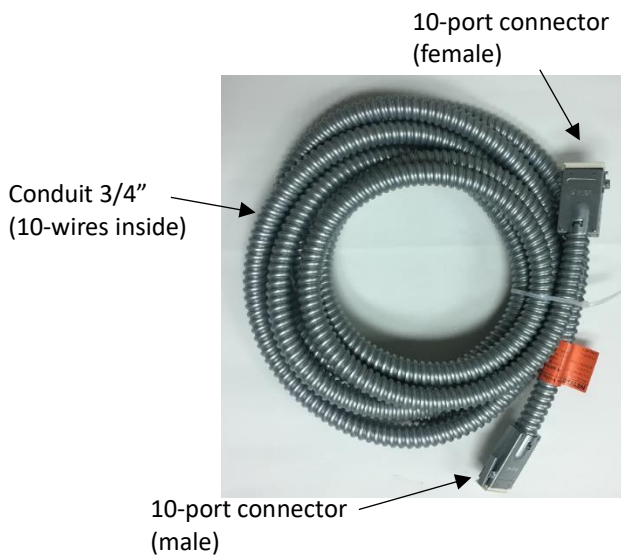


2: 4-circuit Jumper

Connect 4-circuit female whip, extend power to next Zone Box.

3: 1-circuit Jumper

connect 1-circuit whip (C1, C2, C3, C4) of Zone Box, to run power to floor boxes, wall-mount receptacles.



IV ELECTRICAL POINTS 125V 20A / 220V 20A /220V 15A Floor Boxes and Wall-Mount Receptacles

Floor boxes installed on cable trenches

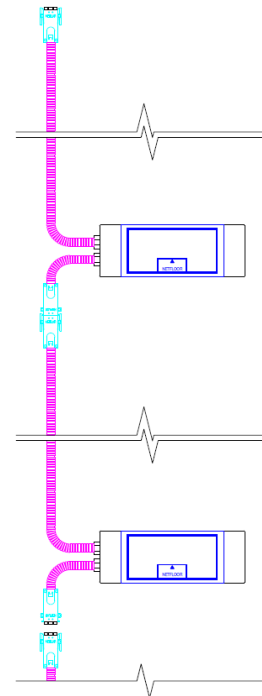
accommodate 2 to 4 power receptacles

1. SE403EXT: 40mm H, 125V 20A

Series connection and extension: 2 whips,
1 female and 1 male connector
1 duplex receptacle, 3 data jack face plate.
Or 2 duplex receptacles at 2 sides of box.



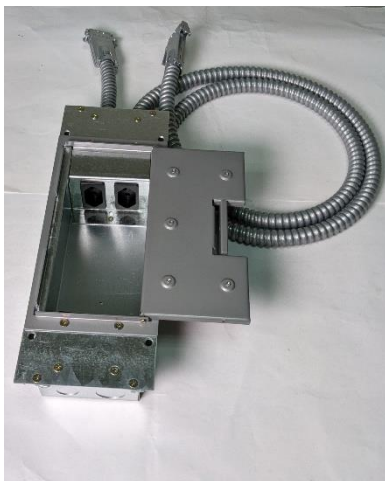
Floor boxes series connection,
installed on cable trenches



2. SE603EXT: 60mm H

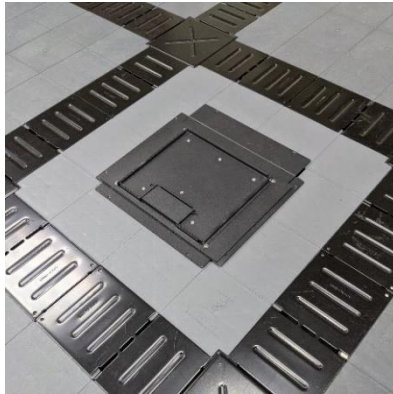
Series connection and extension: 2 whips,
, 1 female and 1 male connector

2 Receptacles accommodation:
2 receptacles, face plate for 3 data jacks.
one duplex receptacle 220V 13A for BS
two 220V 20A/15A for EU, Brazil, etc.



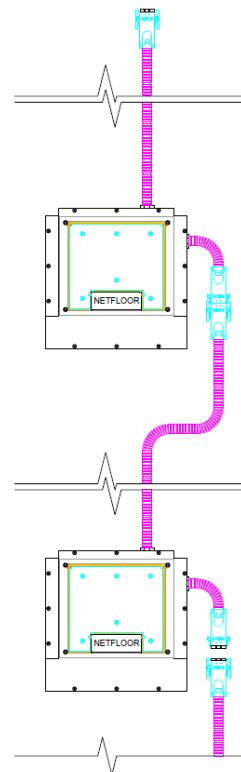
Floor boxes installed on middle of access panels

accommodate 4 to 6 power receptacles



Floor boxes series connection installed at mid of access panels

3. SE40EXT: 40mm H, 125V 20A
Series connection and extension
2 whips, 1 female and 1 male connector
2 duplex receptacles, 4 data jack face plate.



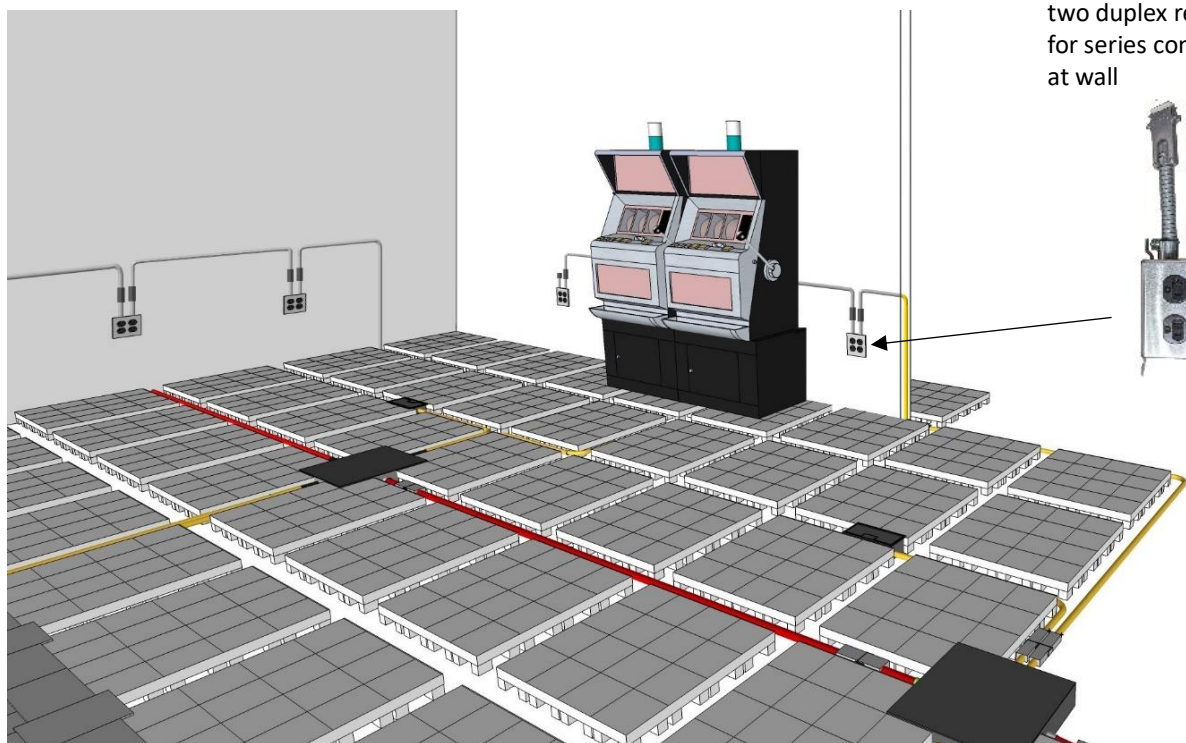
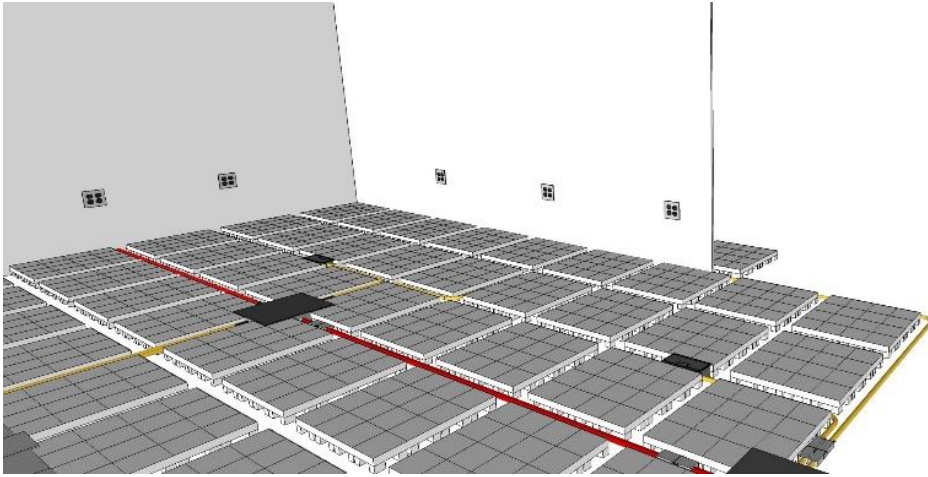
4. SE60EXT: 60mm H, 220V
Series connection and extension
4 receptacles, face plate for 3 data jacks.
Duplex 220V 13A receptacle for BS
Two 220V, 20A/15A for EU, Brazil, etc.



Wall-Mount receptacles through access floor onto wall

5. Wall-mount outlets with female & male whips:
SE403DXT-4R (two duplex receptacles) and SE403DXT-2R (1 duplex receptacles)

Supply power from raised onto wall, series connection of receptacles suitable for using at library, museums, schools, commercial and recreational environments.





SE403DXT-4R with two duplex receptacles for series connection at wall

SPECIFICATIONS


1. POWER ENTRY


From electrical panel:


	DESCRIPTION	
ZPJ-10PFE 	Connector	10 port female connector
	Circuit	4
	Conduit Fitting	trade size 3/4"(21mm)
	Electrical wire	stranded wire*10 (4L/4N/2E)
	Total length	6.15 ft (1.87m)
	Wire length	5.24 ft (1.6m)
	Set location	electrical panel
	Certification	UL Listed: E487237

ZPJ-3PFE-F 	Connector	3 port female connector
	Circuit	1
	Conduit Fitting	trade size 1/2"(16mm)
	Electrical wire	stranded wire*3 (1L/1N/1E)
	Total length	6.15 ft (1.87m)
	Wire length	5.24 ft (1.6m)
	Set location	electrical panel
	Certification	UL Listed: E487237

Start from beginning of access floor:

ZPE-4C 	Connector:	10 port female connector
	Circuit:	4
	Connection method	barrier terminals block *2
	Knockout(sides)	1*1/2" & 1*3/4" (1*16 & 1*21mm)
	Box Dimension	W: 3.4" L: 11.6" H: 1.57"(88*296*40 mm)
	Set location	beginning of access floor
	Certification	assembled of UL listed components

ZPE-2C 	Connector:	two 3-port female connector
	Connection method	barrier terminals block *1
	Knockout (sides)	1*1/2" & 1*3/4" (1*16 & 1*21mm)
	Box Dimension	W: 3.4" L: 11.6" H: 1.57"(88*296*40 mm)
	Set location	beginning of access floor
	Certification	assembled of UL listed components

ZPE-1C 	Connector:	One 3-port female connector
	Connection method	barrier terminals block *1
	Knockout (sides)	1*1/2" & 1*3/4" (1*16 & 1*21mm)
	Box Dimension	W: 3.4" L: 11.6" H: 1.57"(88*296*40 mm)
	Set location	beginning of access floor
	Certification	assembled of UL listed components

2. POWER DISTRIBUTION

ZONE BOX ZP401



Connector:	10 port male connector *1 10 port female connector *1 3 port female connector *4
Circuit:	10-port 4 circuits / 3-port 1 circuit
Dimension	W: 30.7" L: 30.7" H: 1.57" (780*780*40 mm)
Certification	UL Listed: E487237

JUMPER ZPJ-10P



Connector:	10-port female and male connector
Circuit:	4 circuits
Conduit:	3/4" (20mm)
Electrical wire	10
Certification	UL Listed: E487237
ZPJ-10P20	20 ft, (6.11M)
ZPJ-10P12	12 ft, (3.65M)
ZPJ-10P06	6 ft, (1.81M)

JUMPER ZPJ-3P



Connector:	3-port female and male connector
Circuit:	1
Conduit:	9/16" (14mm)
Electrical wire	3
Certification	UL Listed: E487237
length and weight:	
ZPJ-3P12	12 ft(3.65M)
ZPJ-3P06	6 ft (1.81M)

SPLITTER ZP402





Connector:	3-port male & two 3-port female
Circuit:	1
Description	distribute 1 port to 2 port
Dimension	W: 3.9" L: 4.1" H: 0.5" (100*105*13 mm)
Certification	UL Listed: E487237

3. ELECTRICAL POINT BOXES



Installed on cable trench

<p>SE403EX</p> 	Connector:	3-port male connector
	Conduit:	9/16 inch (14mm)
	Whip length:	male 5.36 ft (1.63m)
	Box Dimension	12.59"x4.52"x1.57"(320 x 115 x 40mm)
	Faceplate	125V/20A duplex receptacle*1, Keystone*3
	Certification	UL Listed: E487237
<p>SE403EXT</p> <p>Part No: SE403EX62-2R SE403EX62-4R</p> 	Connector:	3 port male/female connector
	Conduit:	9/16 inch (14mm)
	Whip length:	male 5.36 ft (1.63m), female 1.64 ft(0.5m)
	Box Dimension	12.59"x4.52"x1.57"(320 x 115 x 40mm)
	Faceplate	SE403EX62-2R: 125V/20A duplex receptacle*1, Keystone*3 SE403EX62-4R: 125V/20A duplex receptacles*2
	Certification	UL testing
<p>SE60EXT</p> 	Connector:	3 port male/female connector
	Conduit:	9/16 inch (14mm)
	Whip length:	male 5.36 ft (1.63m), female 1.64 ft(0.5m)
	Box Dimension	12.59"x4.52"x2.36"(320 x 115 x 60mm)
	Faceplate	Receptacle*2 (for BS / BR / EU.) Keystone depends on receptacle type
	Certification	All receptacles are certified at each nation


Installed at middle of access floor panel

SE40EXT-6R&4R2J 	Connector:	3 port male connector
	Conduit:	9/16 inch (14mm)
	Whip length:	male 5.36 ft (1.63m), female 55cm
	Box Dimension	8.74"x9.8"x1.57"(222 x 250 x 40 mm)
	Face plate	SE40EXT-4R2J: 125V/20A duplex receptacle*2, for Keystone*4
		SE40EX-6R: 125V/20A duplex receptacle*3
Certification	All receptacles are certified at each nation.	
SE60EXT-4R4J 	Connector:	3 port male connector
	Conduit:	9/16 inch (14mm)
	Whip length:	male 5.36 ft (1.63m), female 0.55m
	Box Dimension	8.74"x9.8"x2.36"(222 x 250 x 60 mm)
	Face plate	2-4 power socket: BS / BR / EU... data docket: 2 or 6
	Certification	All receptacles are certified at each nation.

4. WALL-MOUNT RECEPTACLES

SE403DX-2R / SE403DX-4R 	Connector:	3 port male connector
	Conduit:	9/16 inch (14mm)
	Whip length:	5.36 ft (1.63m)
	Box Dimension	4" x 4" x 1-1/2"
	Receptacle	125V/20A duplex receptacle*1 125V/20A duplex receptacle*2
SE403DXT-2R/ SE403DXT-4R 	Certification	UL Listed: E521206
	Connector:	3 port male connector
	Conduit:	9/16 inch (14mm)
	Whip length:	Male / female: 8" (200mm)
	Box Dimension	4" x 4" x 1-1/2 inch
	Receptacle	125V/20A duplex receptacle*1 125V/20A duplex receptacle*2
Certification	UL testing	

FREE END TO DESKTOP, FACILITIES, OR WALL RECEPTACLES

ZPJ-3PFE 	Connector:	3 port male connector
	Conduit:	9/16 inch (14mm)
	Conduit Fitting :	trade size 1/2" (16mm)
	Electrical wire	3
	Total length:	4.92 ft (1.5m)
	Wire length:	3.28 ft (1.0m)
	Certification	UL Listed:E487237

Specifications

Systems: ZoneTeq Modular Wiring System
 Manufacturer: Netfloor, Inc.
 Wire Gage: 12 AWG copper wire.
 Cover Material: Galvanized steel.
 Power: 120-240V, 15A-20A
 Country of Origin: Taiwan
 UL listed E487237 / E521206
 Warranty: 5 year warranty.

In pursuing continuous product improvement, the manufacturer reserves the right to amend specifications without prior notice.

www.zoneteq.com



a product division of Netfloor, Inc.
www.netfloor.com

July 25, 2023